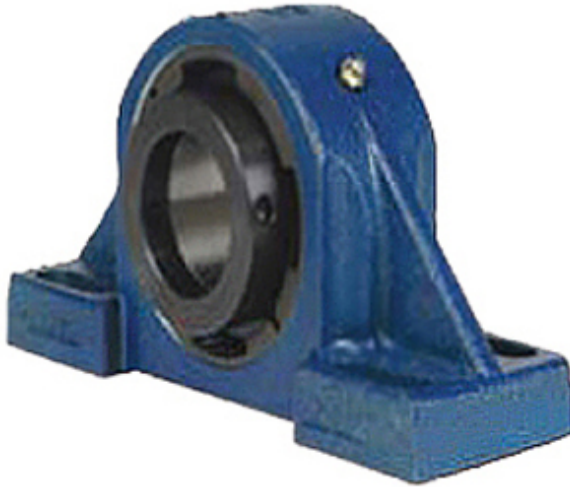




NTN BEARING INDONESIA



3.938 Inch | 100.025 Millimeter x 4.13 Inch |
104.902 Millimeter x 4.938 Inch | 125.425
Millimeter QM INDUSTRIES QVPH22V315SEC
Pillow Block Bearings

Bearing No. QVPH22V315SEC

QVPH22V315SEC Bearing 2D drawings and 3D CAD
models

Category	Pillow Block Bearings
Inventory	0.0
Manufacturer Name	TIMKEN
Minimum Buy Quantity	N/A
Weight	34.958
EAN	0883450219303
Product Group	M06288
Number of Mounting Holes	4
Mounting Method	V Lock
Housing Style	4 Bolt Pillow Block
Rolling Element	Spherical Roller Bearing
Housing Material	Cast Steel
Expansion / Non-expansion	Expansion
Mounting Bolts	3/4 Inch
Relubricatable	Yes
Insert Part Number	22222
Seals	Double Lip Viton
Housing Configuration	1 Piece Solid
Inch - Metric	Inch
Other Features	Double Row Single Nut SAF Style
Long Description	4 Bolt Pillow Block; 3-15/16" Bore; 4-15/16" Base to Center Height; V Lock Mount; Spherical



NTN BEARING INDONESIA

	Roller Bearing; 11-7/8" Minimum Bolt Spacing; 14-1/2" Bolt Spacing Maximum; Relubricatab
Category	Pillow Block
UNSPSC	31171511
Harmonized Tariff Code	8483.20.40.80
Noun	Bearing
Keyword String	Pillow Block
Manufacturer URL	http://www.qmbearings.com
Manufacturer Item Number	QVPH22V315SEC
Weight / LBS	77
B	4.938 Inch 125.425 Millimeter
D	4.13 Inch 104.902 Millimeter
Bolt Spacing Maximum	14.5 Inch 368.3Millimeter
Bolt Spacing Minimum	11.875 Inch 301.625Millimeter
Nominal Bolt Center to Center	13.2 Inch 335.3 Millimeter
d	3.938 Inch 100.025 Millimeter
Actual Bolt Center to Center	0 Inch 0Millimeter