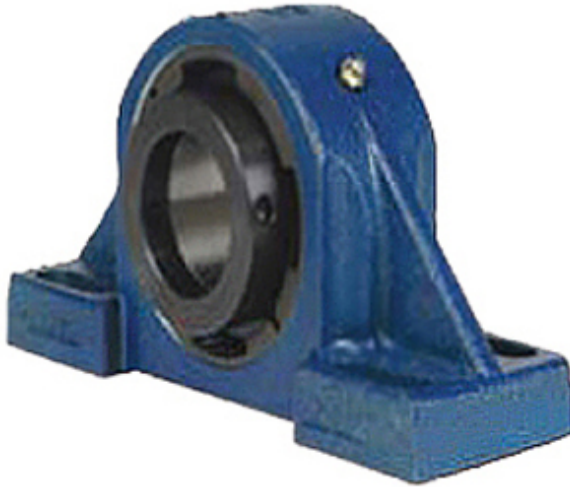




NTN BEARING INDONESIA



QVVPH20V308SEC Bearing 2D drawings and 3D CAD models

3.5 Inch | 88.9 Millimeter x 4.63 Inch | 117.602 Millimeter x 4.5 Inch | 114.3 Millimeter QM INDUSTRIES QVVPH20V308SEC Pillow Block Bearings

Bearing No. QVVPH20V308SEC

Category	Pillow Block Bearings
Inventory	0.0
Manufacturer Name	TIMKEN
Minimum Buy Quantity	N/A
Weight	27.24
EAN	0883450221757
Product Group	M06288
Number of Mounting Holes	4
Mounting Method	V Lock
Housing Style	4 Bolt Pillow Block
Rolling Element	Spherical Roller Bearing
Housing Material	Cast Steel
Expansion / Non-expansion	Expansion
Mounting Bolts	3/4 Inch
Relubricatable	Yes
Insert Part Number	22220
Seals	Double Lip Viton
Housing Configuration	1 Piece Solid
Inch - Metric	Inch
Other Features	Double Row Double Nut SAF Style
Long Description	4 Bolt Pillow Block; 3-1/2" Bore; 4-1/2" Base to Center Height; V Lock Mount; Spherical Roller Bearing;



NTN BEARING INDONESIA

	10-7/8" Minimum Bolt Spacing; 13.38" Bolt Spacing Maximum; Relubricatable; C
Category	Pillow Block
UNSPSC	31171511
Harmonized Tariff Code	8483.20.40.80
Noun	Bearing
Keyword String	Pillow Block
Manufacturer URL	http://www.qmbearings.com
Manufacturer Item Number	QVVPH20V308SEC
Weight / LBS	70
Actual Bolt Center to Center	0 Inch 0Millimeter
Bolt Spacing Maximum	13.38 Inch 339.852Millimeter
d	3.5 Inch 88.9 Millimeter
Nominal Bolt Center to Center	12.1 Inch 308.5 Millimeter
Bolt Spacing Minimum	10.875 Inch 276.225Millimeter
B	4.5 Inch 114.3 Millimeter
D	4.63 Inch 117.602 Millimeter